

BlueRailDCC by Tam Valley

Instructions for Basic Mode Installation

PLEASE READ USERGUIDE AT BLUERAILTRAINS.COM PRIOR TO INSTALLING

INSTALLATION: A jumper must be added to the board to put the board in basic mode. In this mode, the “DCC Out” is used to control the speed/direction of a motor. Additional connections provide control of the front and rear headlights as in the diagrams.

5-Amp Board Wiring

“BASIC MODE”

CONNECTIONS:

DCC OUT: ___ Motor +/-

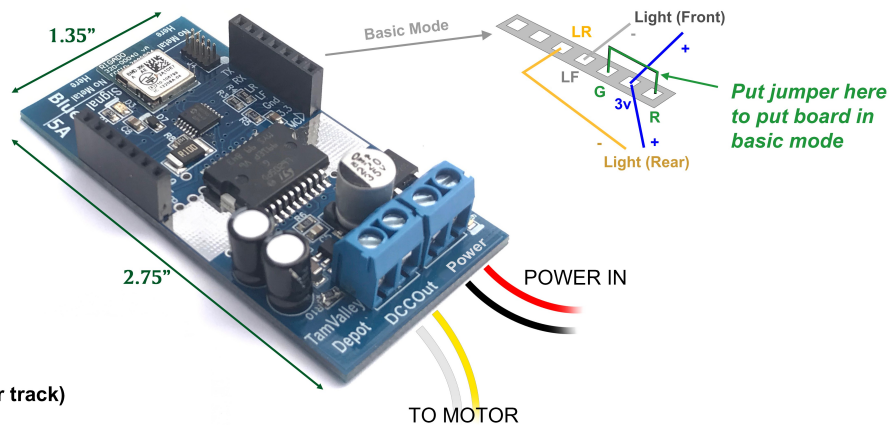
Gnd & R: ___ Jumper

LF: ___ Light-Front (-)

LR: ___ Light-Rear (-)

3.3v: ___ Lights F/R (+)

Power: ___ Power (battery,DCC or track)



2-Amp Board Wiring

“BASIC MODE”

CONNECTIONS:

White/Yellow: ___ Motor +/-

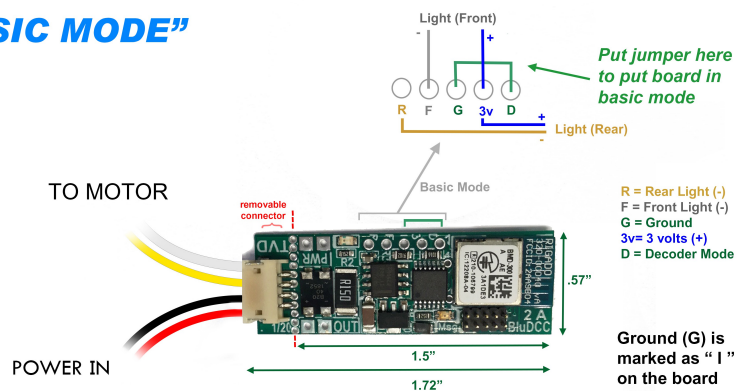
D & I: ___ Jumper "I" = ground (-)

F: ___ Light-Front (-)

R: ___ Light-Rear (-)

3: ___ Lights F/R (+) "3" = 3.3v (+)

Red/Black: ___ Power (battery,DCC or track)



For product support, please post questions at <http://Groups.io/g/BlueRailDCC> under one of the following threads:

ADMIN - Software(app) Tech Support Questions

ADMIN - Hardware Tech Support Questions